

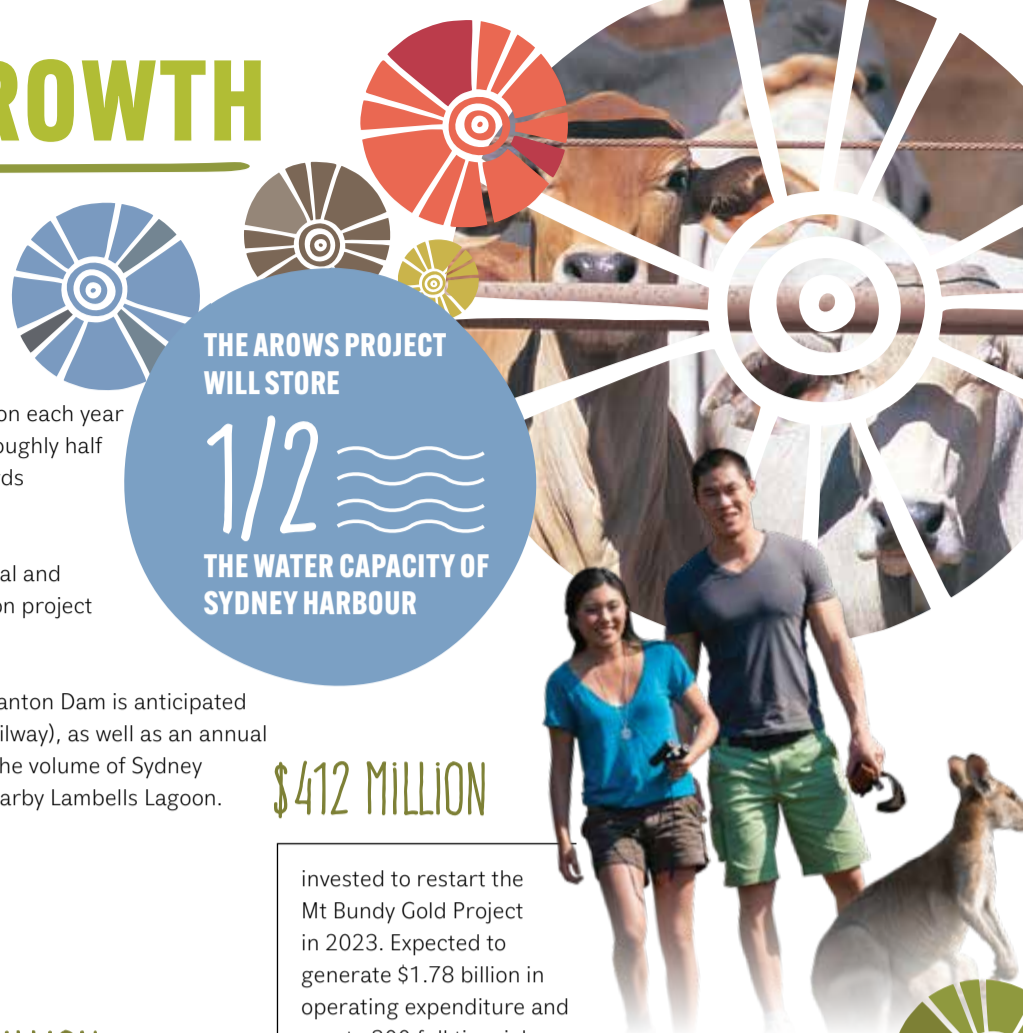
A LOCATION POISED FOR GROWTH

THE REGION SURROUNDING THE SANCTUARY IS RIPE WITH OPPORTUNITY - A NUMBER OF EMERGING PROJECTS ARE ON THE HORIZON.

ASX-listed Duxton Farms are the successful proponent of the 26,000 hectare Wildman Agriculture Precinct, which will further amplify the region's food bowl status. Presently, Agribusiness contributes around \$1.5 billion each year to the Territory's economy, which includes \$1.2 billion from cattle. Horticulture injects around \$200 million roughly half is from the area surrounding The Sanctuary. The NT Government has a vision to increase the sector up towards \$3.5 billion by 2030.

Works are currently underway to rejuvenate Kakadu National Park, with \$411 million committed by the Federal and NT Governments. The Mount Bundy Gold Project was awarded Major Project Status expediting the \$412 million project that will create around 300 full time jobs.

The Adelaide River Off-Stream Water Storage (AROWS) project in conjunction with the recommissioning of Manton Dam is anticipated to have a construction cost of \$1.45 billion (exceeding the construction cost of the \$1.3 billion AustralAsia Railway), as well as an annual operating cost of \$34.8 million. It will have the capacity to hold about 250 GI of water, which equates to half the volume of Sydney Harbour, becoming a significant enabler of industry expansion at Middle Arm and irrigated agriculture at nearby Lambells Lagoon.



THE AROWS PROJECT WILL STORE

1/2

THE WATER CAPACITY OF SYDNEY HARBOUR

\$412 MILLION

invested to restart the Mt Bundy Gold Project in 2023. Expected to generate \$1.78 billion in operating expenditure and create 300 full time jobs for around 10 years.

\$411 MILLION

A combined Federal and NT Government spend to rejuvenate Kakadu National Park and transform Jabiru from a mining town into a world-class tourism hub.

26,000 HECTARES

Duxton Farms secured the 26,000 hectares of prime agricultural crown land in 2024. Known as the Wildman Agriculture Precinct located near the Mary River it will develop high value agricultural and horticultural crops.

\$49 MILLION

Woolner Station was sold in 2024 to Rallen Australia. The company aim to increase cattle carrying capacity that potentially could fill an entire live export ship from the nearby Port of Darwin.

\$747 MILLION

upgrades to four Territory Defence training facilities that includes the nearby Mount Bundy,

\$77.88 MILLION

road upgrade project was completed in 2023 protecting the Arnhem Highway from the Adelaide River Floodplain.

\$1.45 BILLION

The Adelaide River Off-Stream Water Storage (AROWS) project has a development timeframe of 7-10 years and expected construction cost of \$1.45 billion. The project will provide future water security to northern Australia, unlocking new agricultural opportunities to become a key driver in the Territory's growth and economic prosperity.

\$64 MILLION

The duplication of the Arnhem Highway from its entrance at the Stuart Highway intersection for another 12 kilometres to Kostka Road is expected to commence later this year.

When completed, this will reduce travel time to the Marrakai area.



DARWIN
50 MIN

PALMERSTON
35 MIN

HUMPTY DOO
20 MIN

COOLALINGA
30 MIN

\$60+ MILLION

invested with support from NAIF, in the expansion of Australia's largest barramundi farm at Humpty Doo that will create up to 200 permanent jobs.

ADELAIDE RIVER BOAT RAMP
5 MIN

MARY RIVER NATIONAL PARK
30 MIN

KAKADU NATIONAL PARK
45 MIN

DUXTON FARMS
Wildman Agriculture Precinct

CORROBOREE BILLABONG
30 MIN

THE SANCTUARY.

BARK HUT INN re-opened late 2020 having been closed since 2017. It is a popular weekend destination for Darwin locals to visit and is a welcome activation for the region.

OVER 1/2 OF AUSTRALIA'S MANGOES ARE FROM THE NORTHERN TERRITORY